



WL5020i

WLAN Cardbus Adapter

User's Manual

Version 1.0

TECOM CO., LTD.

March 2003

©2003 by TECOM CO., LTD. All rights reserved.

Printed in Taiwan

Table of Contents

Package Contents and Trademark(s)	3
Software Installation	3
TECOM WLAN Utility Tool	4
1. General	4
2. Advanced	5
3. Statistics	6
4. Site Survey	7
5. Encryption	8
Troubleshooting	9
Specifications	10
Technical Support	10

Package Contents

The package you have received should contain the following items:

- Wireless LAN PC Card
- A CD-R containing Driver, Utility Software and User's Manual
- Quick Installation Guide
- Acrobat Reader 6.0

Trademark(s)TM and Registered Trademark(s)[®]

TECOM and the TECOM logo are trademarks of TECOM CO., LTD.

Microsoft, Windows are registered trademarks of Microsoft Corporation.

Other brand and product names may be registered trademarks or trademarks of their respective holders.

Software Installation

1. Insert the original CD (packed with the product) into CD-ROM reader, wait for automatic pop-up window and then double-click "setup" to proceed with the installation.
2. After the installation process is complete, re-start your notebook PC. Insert TECOM WLAN PC card into Cardbus slot. A new hardware wizard will pop up and guide you to install drivers in your system.
3. A tray icon shown as below should be seen at this time.

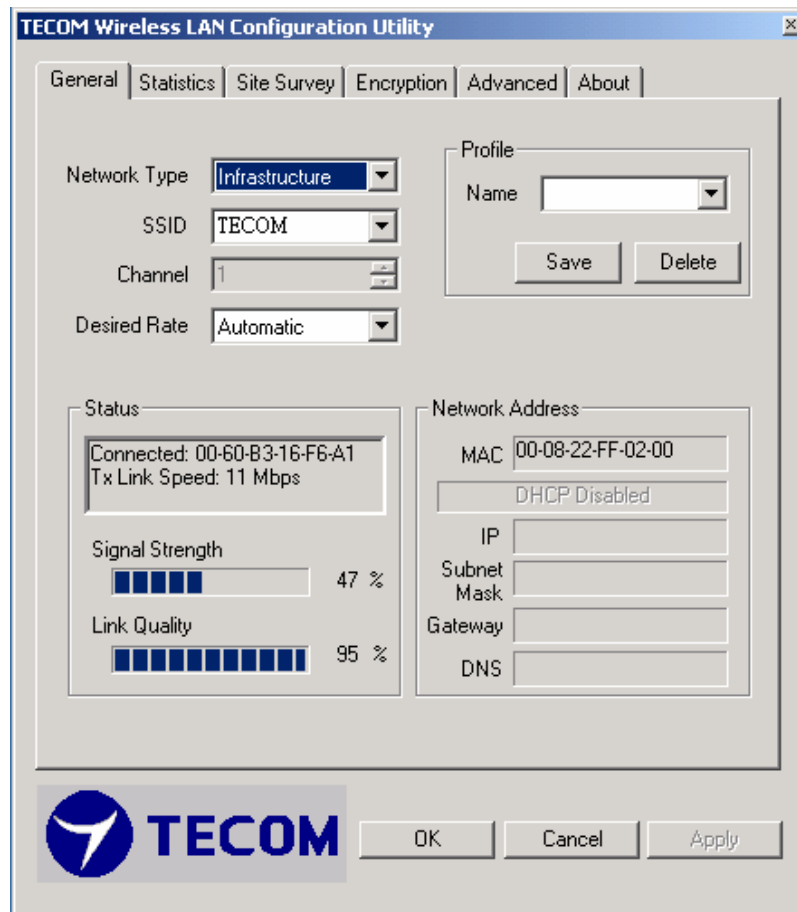


4. The icon of WL5020i should be in green when the PC card is connecting to a 802.11b Access Point. Double click the icon first from right to bring up TECOM WLAN Utility Tool.



TECOM WLAN Utility Tool

After clicking the icon second from left on the above icon-tray, TECOM WLAN Utility Tool window will be shown as following,



Please click on the tabs on the top of the screen to configure.

1. General Tab

Network Type: There are two types of Network you can set

Infrastructure (Access Point) – this will work only with an existing AP

Ad-hoc (Peer-to-Peer) – this is an 802.11 compatible ad-hoc mode. All stations with the same SSID are connected peer-to-peer. No AP is needed.

SSID: Stations which link together should be set to the same SSID

Desired Rate: Unless you definitely know the rate you can get, always select “Automatic Rate”.

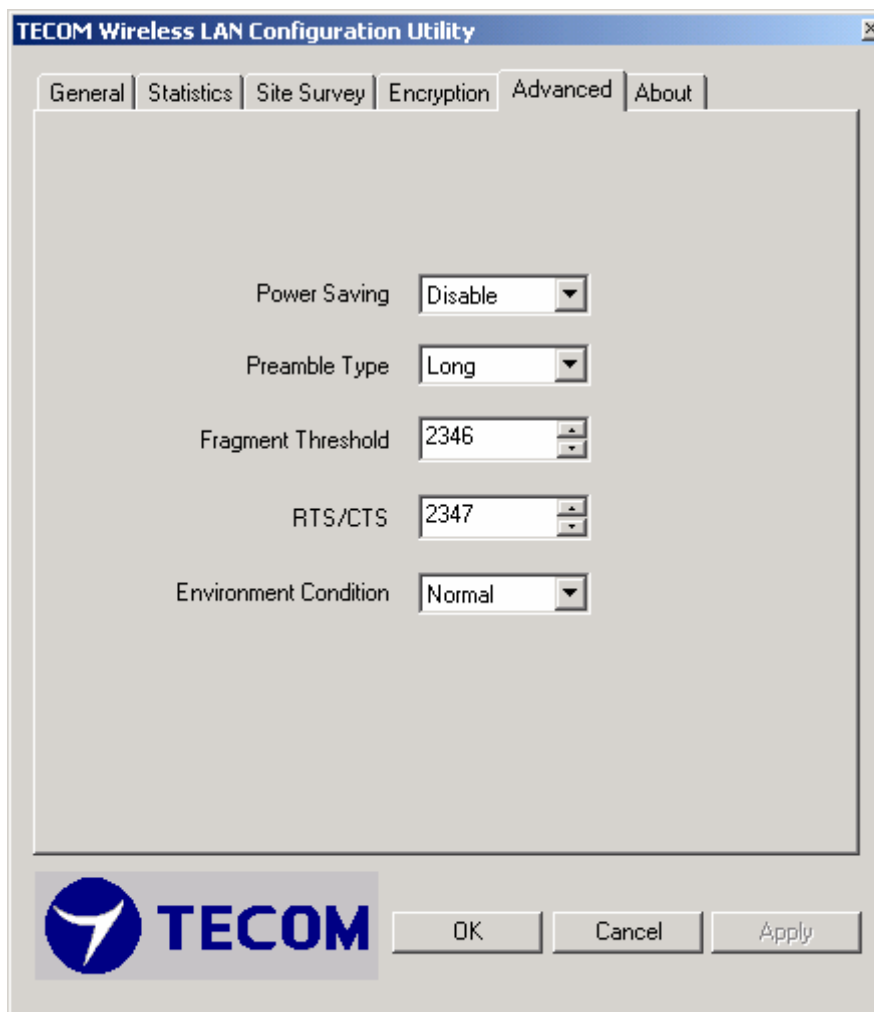
Profile: To save the above setting into a profile, change the profile name and click “Save” button. Or press “Delete” button to delete a profile.

Status: This section shows the current link information of Network, Signal Strength and

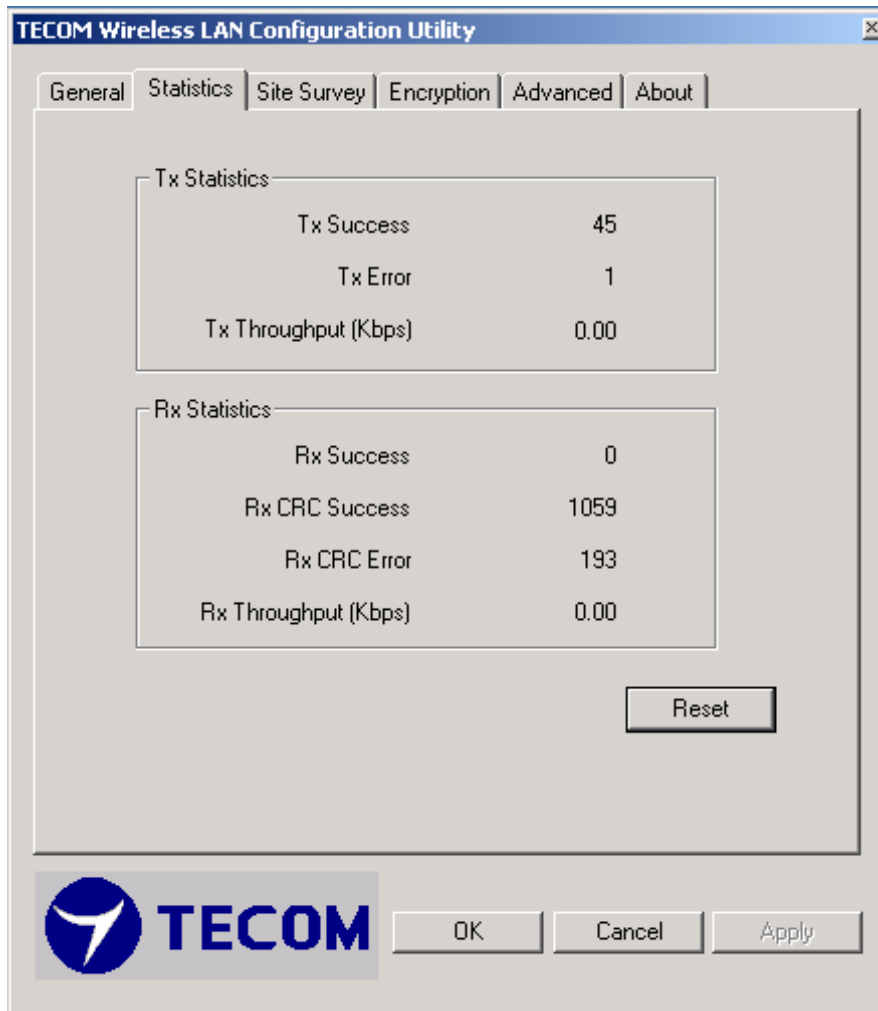
Link Quality

Network Address: This section shows the current Network status such as MAC address (Wireless Card), DHCP (Enable or not), IP address, Subnet Mask address, Gateway Address and DNS server address.

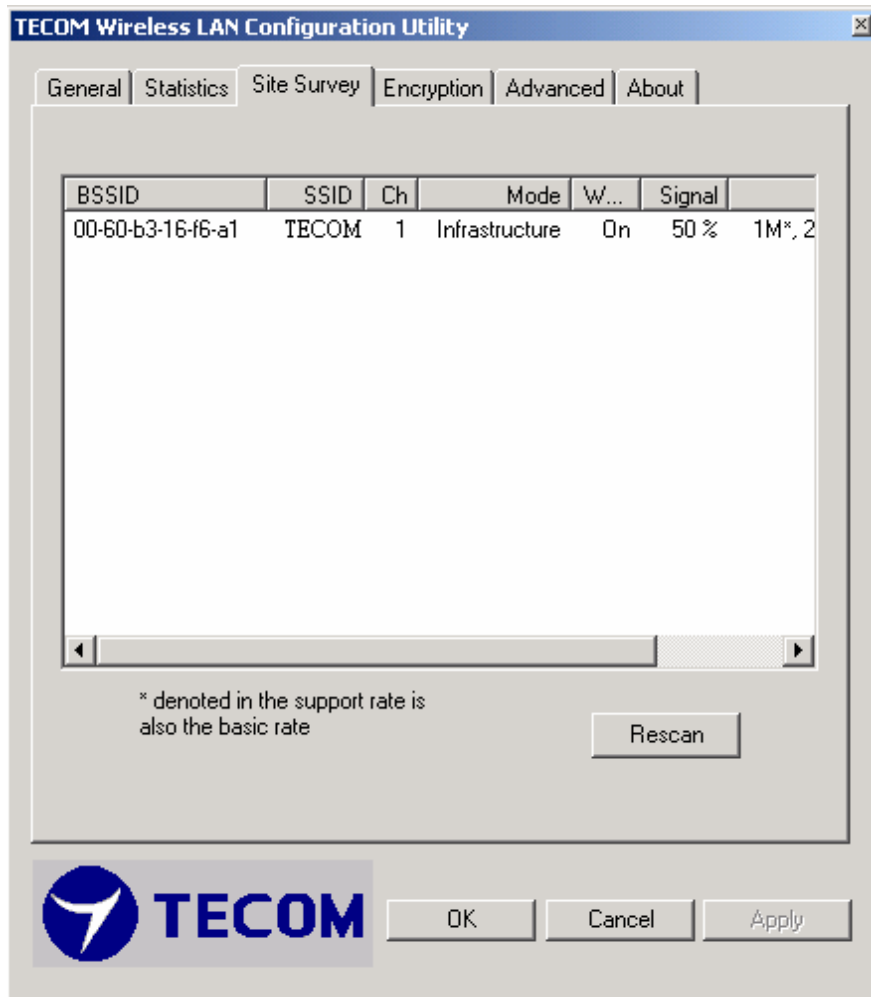
2. Advanced Tab: Choosing the **Advanced** option, you can change advanced configuration settings, such as the **Power Saving mode**, **Preamble Type**, **Fragmentation Threshold**, and **RTS/CTS Threshold**. The following figure shows the recommended configuration for the advanced settings.



3. Statistics Tab: This option enables you to view the available statistic information (Total Packet Number, Error Packet Number, FER-Frame Error Rate, Throughput). In order to reset or update this statistics list, press the “**Reset**” button.

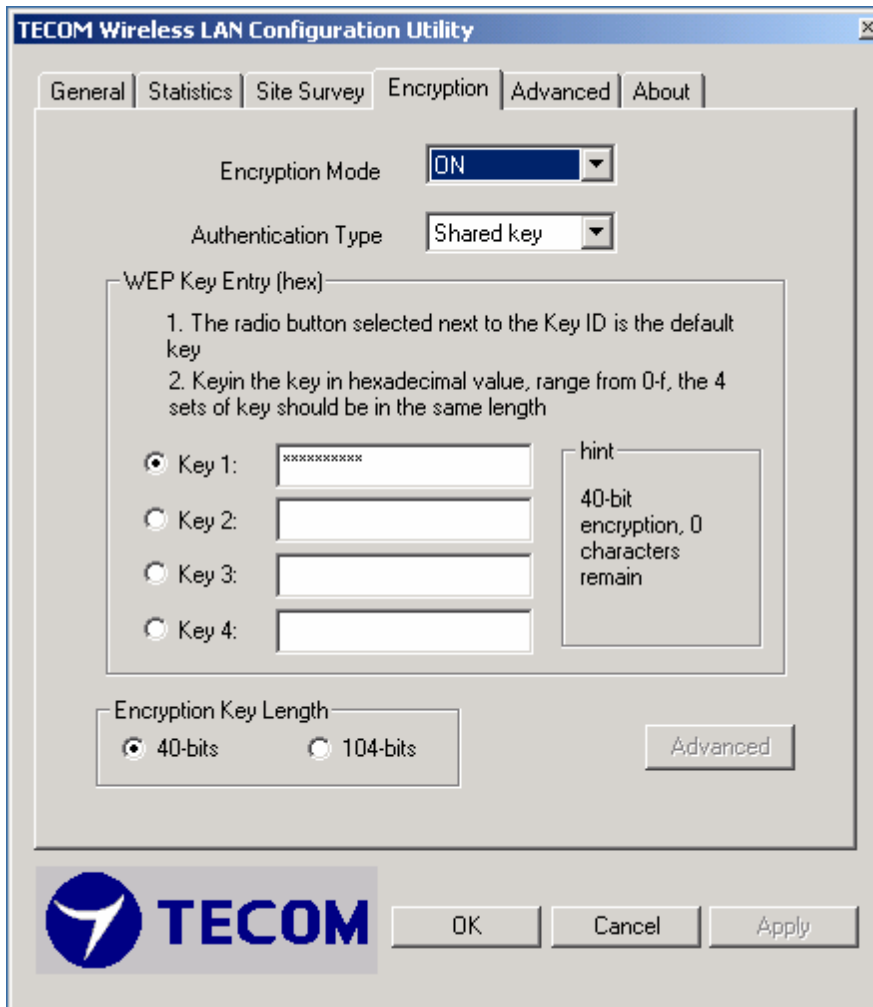


4. Site Survey Tab: By choosing the *Site Survey* option, you can scan all channels to find all access points within the range of your card. In order to update this list, press the “**Rescan**” button. If you want to link to an AP in this list, Double-click on it. The application will jump over to *General* screen and show all the parameters of the connection newly established.



5. Encryptions Tab: This section let you set specify one WEP key to use. If you decide to use encryption, choose one of the available 4 WEP keys and the “**Encryption Key Length**”. You also have the option to select the “**Authentication Type (Open system/Shared key)**”. To activate the change, press “**Apply**” button at the bottom of the screen.

Note: If your WEP Key is short of ten characters, please fill up the remain characters to 0. For example: The Key is 12345. You must keyin 1234500000.



Troubleshooting

1. Adapter Installation Problems

If your computer cannot find the TECOM Wireless Cardbus Adapter or the network driver is not installed correctly, check the followings,

- Make sure the adapter is securely inserted in the Cardbus slot. when you insert the wireless adapter into the notebook's slot, a click should be heard if the adapter is properly inserted. Check for any hardware problems, such as physical damage to the card connector.
- Try the card in another CardBus slot. If this also fails, test your computer with another TECOM wireless LAN cardbus that is known to operate correctly.

2. Diagnostics utility

- Make sure your computer is using the latest BIOS.
- If there are other network adapters in the computer, they may be causing conflict, remove all other adapters from the computer and test the wireless adapter separately.
- Check for a defective computer Cardbus slot. Try the adapter in another computer Cardbus slot that is known to operate correctly.

Specifications

Data Rate	11, 5.5, 2 and 1 Mbps, Auto Fallback
Standard	IEEE 802.11b
Operating Range	Up to 100m indoors Up to 350m outdoors
Radio Signal Type	CCK – 11, 5.5 Mbps DQPSK – 2Mbps DBPSK – 1Mbps
Input Voltage	3.3 V
Antenna	Built-in side-stem antenna
LED Indicator	Connection
Host Interface	68-pin connector to Cardbus slot
Operating Temperature	0-50 C (32 – 140 F)
Storage Temperature	0-70 C (32 – 158 F)
Humidity	5 to 80% (non-condensing)

Technical Support

If you are still experiencing problems after reading Product User's Guide and the Troubleshooting section, you may either contact our technical support at: support@tecom.com.tw.

OR, simply click our URL address www.tecomproduct.com to go to our company website and check the latest version and other information about the product and/or software.