

## Quick Installation Guide for WL5020i

1. Before software installation, do not insert WL5020i PC Card into your computer.
2. Insert the Software Installation CD-ROM into the CD-ROM driver.
3. Find a file “setup.exe”, and click it to install the software. WL5020i Setup is preparing the InstallShield Wizard after you click “**setup.exe**”. Shown as figure 1.

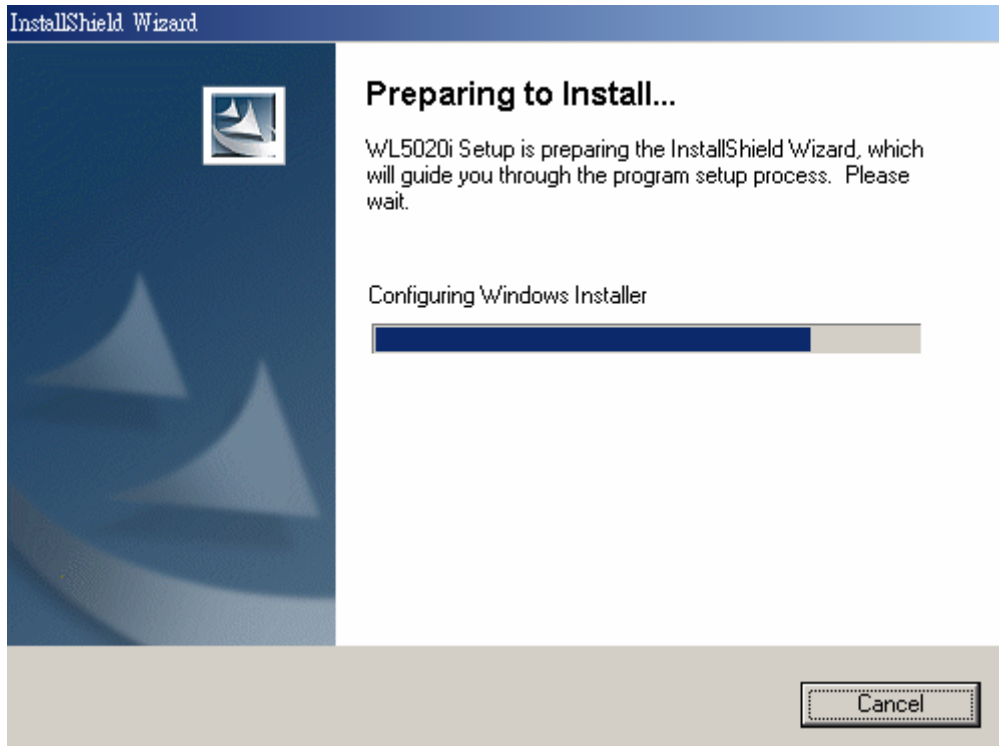


Figure 1

4. The “InstallShield Wizard” window appears, click on **Next**. Shown as figure 2.

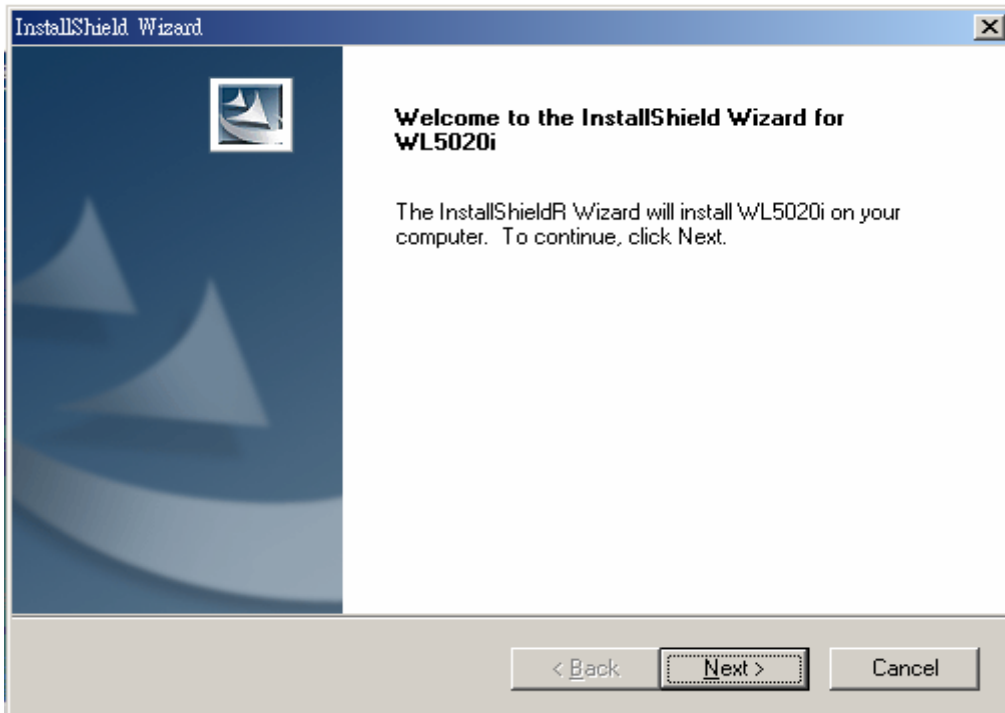


Figure 2

5. The “Customer Information” window appears, define the **User Name** and **Company Name**, and select the type of application user; click on **Next**. Shown as figure 3.

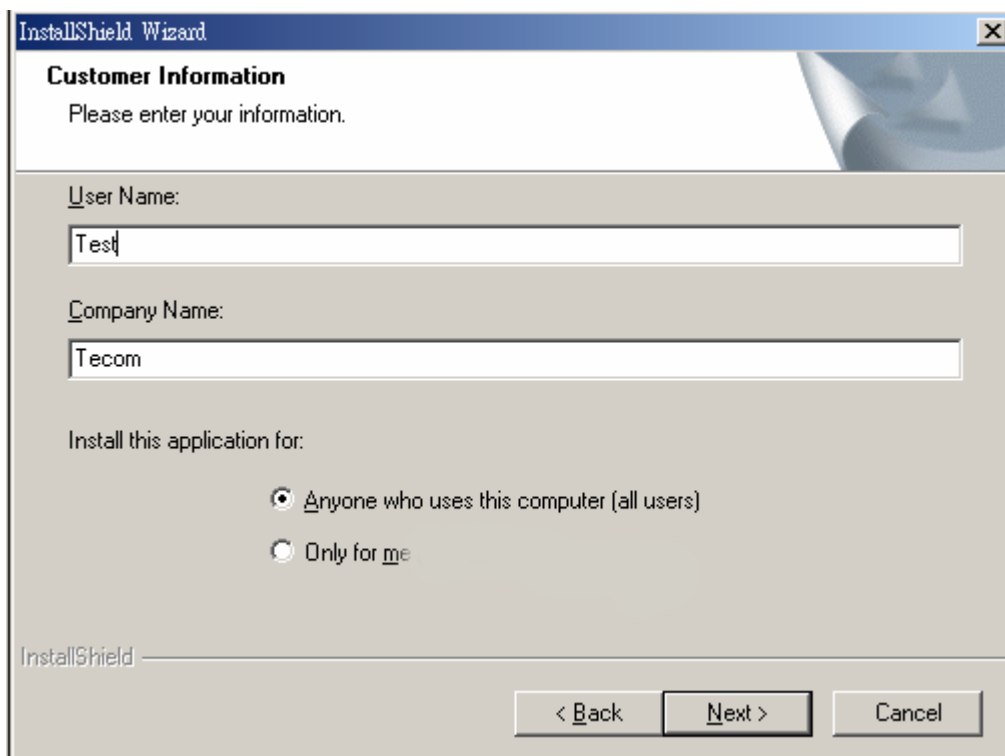


Figure 3

6. The “Choose Destination Location” window appears, to install to the default folder, click on **Next**. To install to a different folder, click on **Browse** and select another

folder. Shown as figure 4.

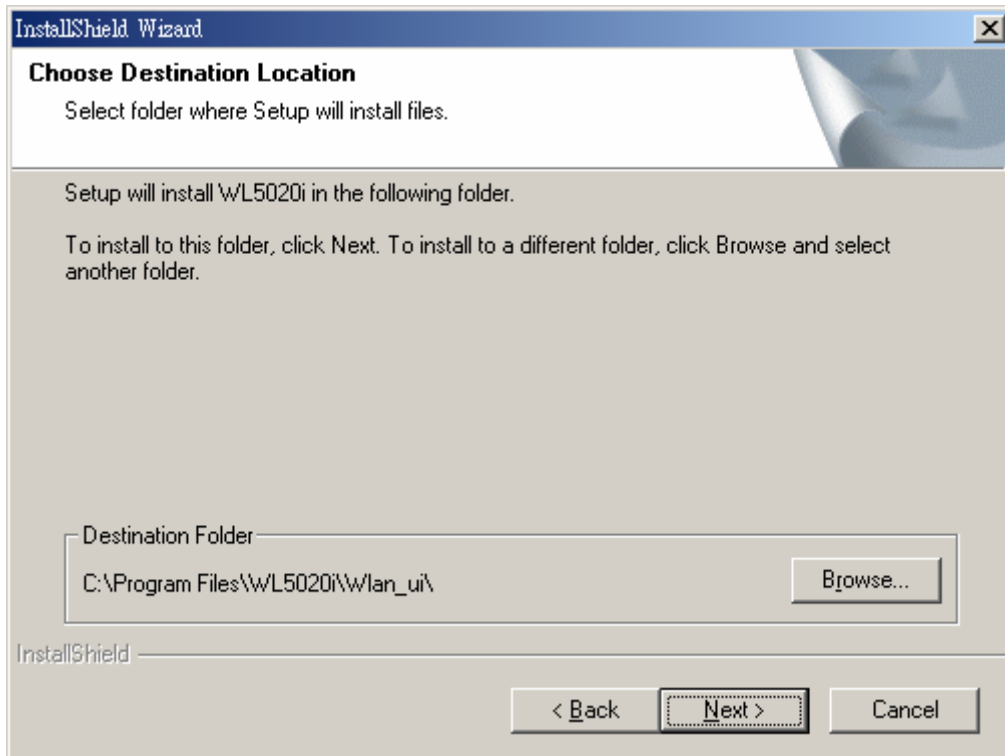


Figure 4

7. The “Setup Type” window appears, to select **Typical** and click on **Next**. Shown as figure 5.

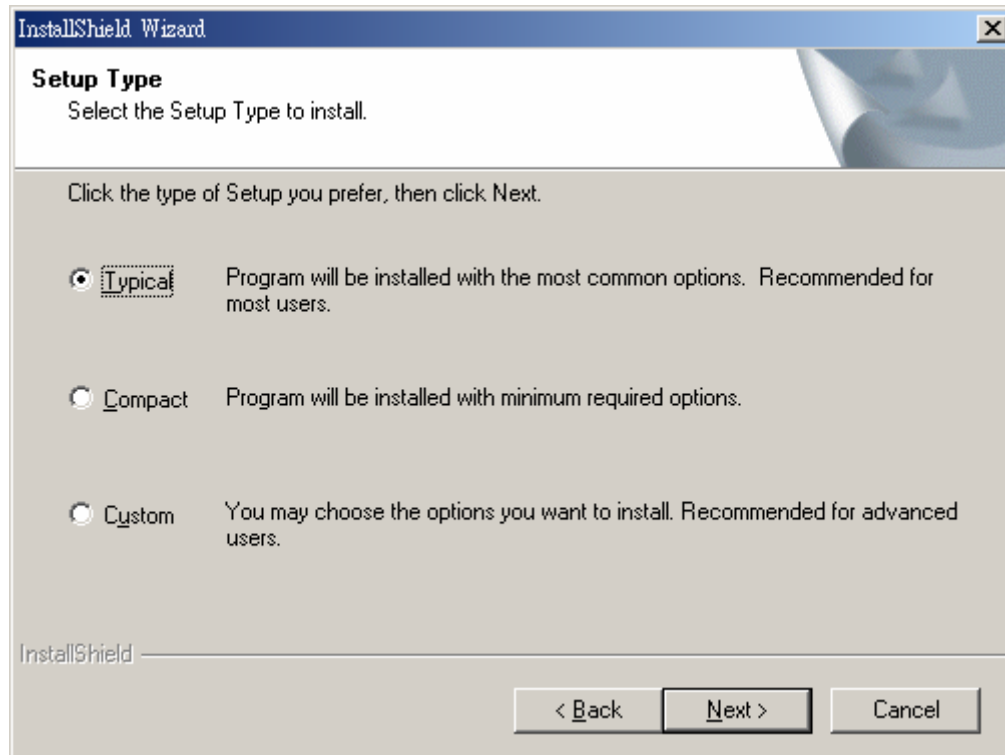


Figure 5

8. Confirms the completion of software installation; click **Finish**. Shown as figure 6.

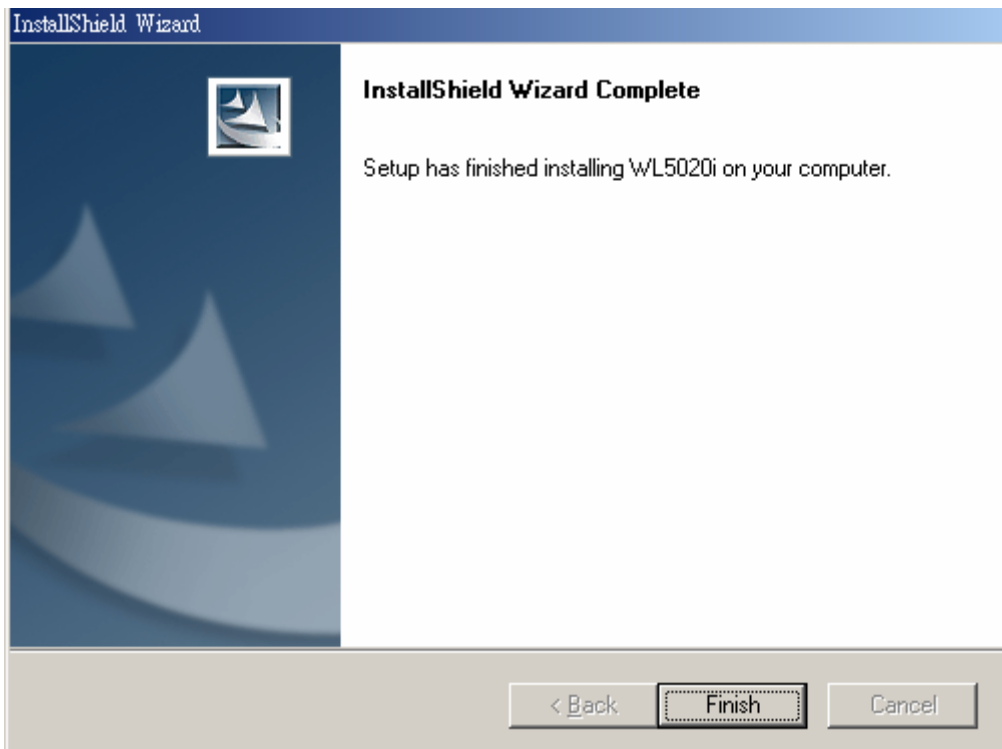


Figure 6

9. Before you can use the program, you must restart your computer.

10. Please insert WL5020i PC Card into your computer after restart the computer, and then a window appears that confirms about Microsoft digital signature; click **Yes** to finish installation, a tray icon shown as below and you can connect your computer to any 802.11b enabled device through the air. Shown as figure 7.



Figure 7